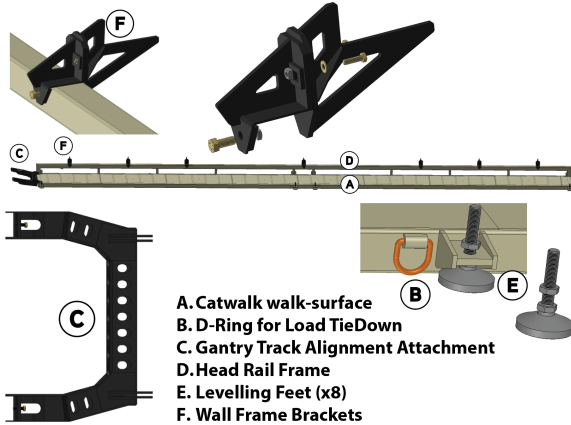


InnovaTech IMP Table CatWalk

PRODUCT USER GUIDE

IMPT-CW



Safety

Do not modify this product.

Ensure care is taken in setting up or taking down to avoid pinch points.

Overview

The InnovaTech IMP Table Catwalk serves both as a low-profile walkway and header rail positioning jig as part of the Insulated Metal Panel (IMP) Wall Table setup. The Wall Table setup uses two catwalks, one at the head of each side of the table. Brackets support IMP structure. Feet are used for leveling.

Specifications

Dimensions

Length	51 ft - 11.75 in
Width (without brackets)	60.25 in
Width (with brackets)	67.5 in
Height (without brackets)	18 in
Height (with brackets)	26.19 in
Height (to bracket seat).....	22.19 in
Max Grade/Slope (width direction).....	±3%
Max Grade/Slope (length direction)	±5%

Weight and Capacity

Weight	590 lbs
Per Point Capacity	5,000 lbs
Total Capacity	20,000 lbs

Product Use

Pre-Use Inspection:

Inspect IMP Table CatWalk before each use for the following:

1. Structure: No breaks of welds or parent metal.
2. Feet, Bolts, and Brackets: All components are present and in good condition

Setup:

1. Secure Gantry Track Alignment Attachment to Gantry Track.
2. Check and Adjust for Squareness to Track.
3. Adjust Leveling Feet until Head Rail Frame slope for consistency with IMP Table components.
4. Set Wall Frame Brackets to match IMP Wall Frame Layout.

Transport and Storage

Use D-Rings to secure for Transport.

Store IMP Table Catwalk where it is not exposed to a caustic environment.

Revision Log

Produced by: InnovaTech Manufacturing
 Product: IMP Table CatWalk Product User Guide
 Manual Product Code: IMPTCW-PUG01-R00
 Version: First Production
 Production Date: June 1, 2023

This document is intended as a basic source of information on the safe use and maintenance of InnovaTech Manufacturing's IMP Table CatWalk. This document provides general information as well as specific warnings, instructions, and information that users of this product must read, understand, and follow.

This document is not intended as an all-encompassing safety "Rule." Instead, InnovaTech Manufacturing presents this information as a reference and guide only. It is the purchaser's and user's responsibility to identify specific safety hazards and determine proper procedures to prevent those hazards from inflicting injury.

Safety is paramount in the use of this product. A copy of this guide should be made available to all persons using this product. This guide is available online at <https://innova.tech>.

All information in this document is based on the latest product information at the time of publication. However, there may be design improvements from time to time so that photographs, text, and sketches in this document may not exactly match your product. InnovaTech Manufacturing's responsibility, financial or otherwise, for any consequences arising out of the use of this document or product is limited by our product warranty. The information contained herein is subject to change, and revisions may be issued to advise of such changes. InnovaTech reserves the right to make product changes at any time without obligation.

This document contains subject matter to which InnovaTech Manufacturing has proprietary rights. Recipients of this document shall not duplicate, use, or disclose information contained herein, in whole or in part, for any use other than training personnel on safe use and maintenance of this product.

If you have any questions or concerns about the content of this service and maintenance guide or, if you would like to request updated information, we want to hear from you.

Please contact us:

<https://innova.tech>

support@innova.tech

INNOVATECH MANUFACTURING
TECHNICAL PUBLICATIONS
4360 N WECCO RD
CEDAR CITY, UT, USA 84721

The InnovaTech IMP Table CatWalk is protected under US Patent pending.

©2023 InnovaTech Manufacturing. All Rights Reserved.